

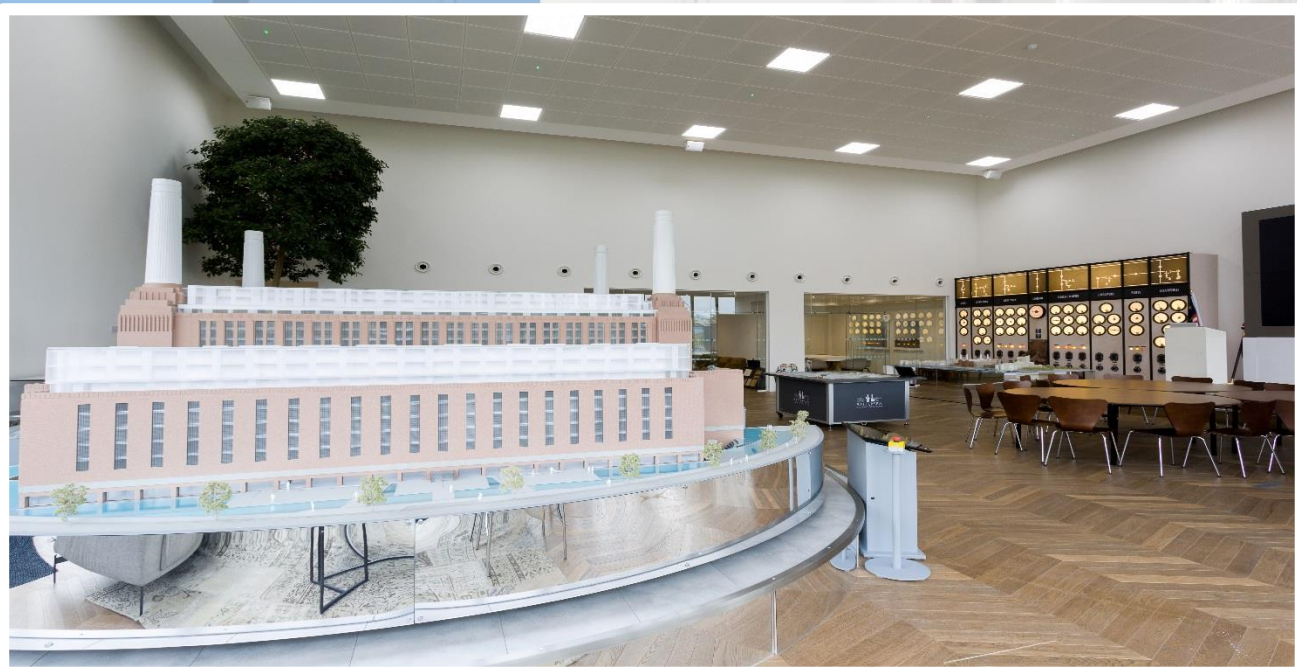
# Battersea Power Station – The Marketing Suites

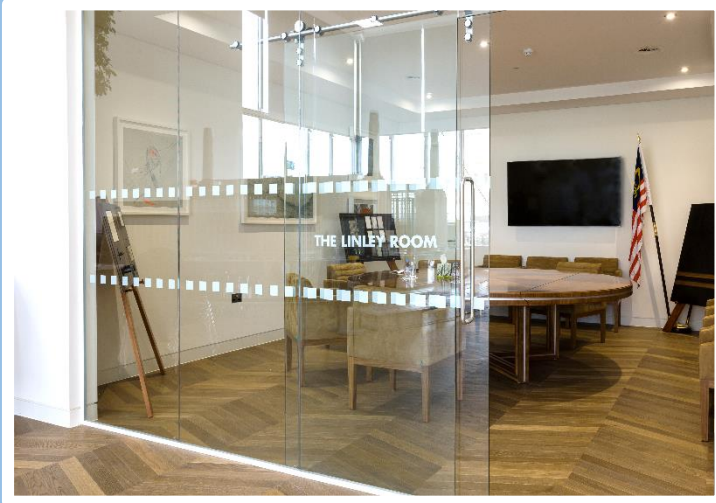
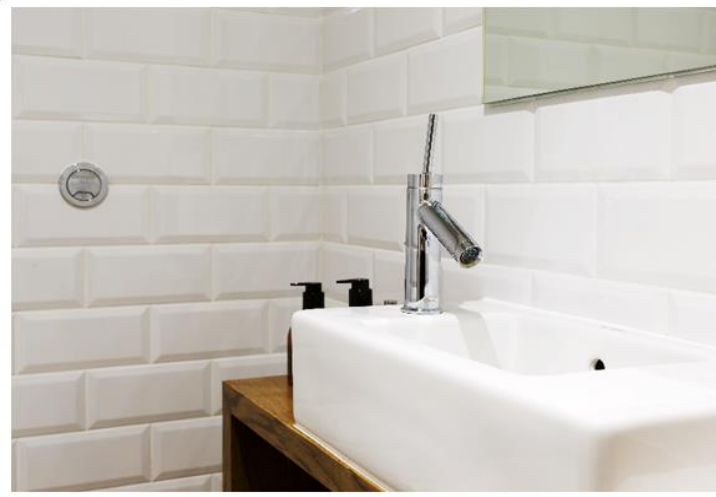


**We have recently completed refurbishing 2 key marketing areas at the iconic Battersea Power Station.**

Working alongside local company, Roofing and Construction, we are delighted to have undertaken, amongst others, the below key elements, to the required high standards ;

- Carpentry and Joinery
- Glass Partitioning and Door-sets
- Dry-lining
- Tape and Jointing
- Plasterboard Feature Ceilings
- Metal Grid ceilings and support structures
- Electrical and Lighting Installations
- Air-Conditioning and Heating Installations
- Washroom and Kitchen Installations





Tel: 01268 572227

Website: [www.talisprojects.co.uk](http://www.talisprojects.co.uk)